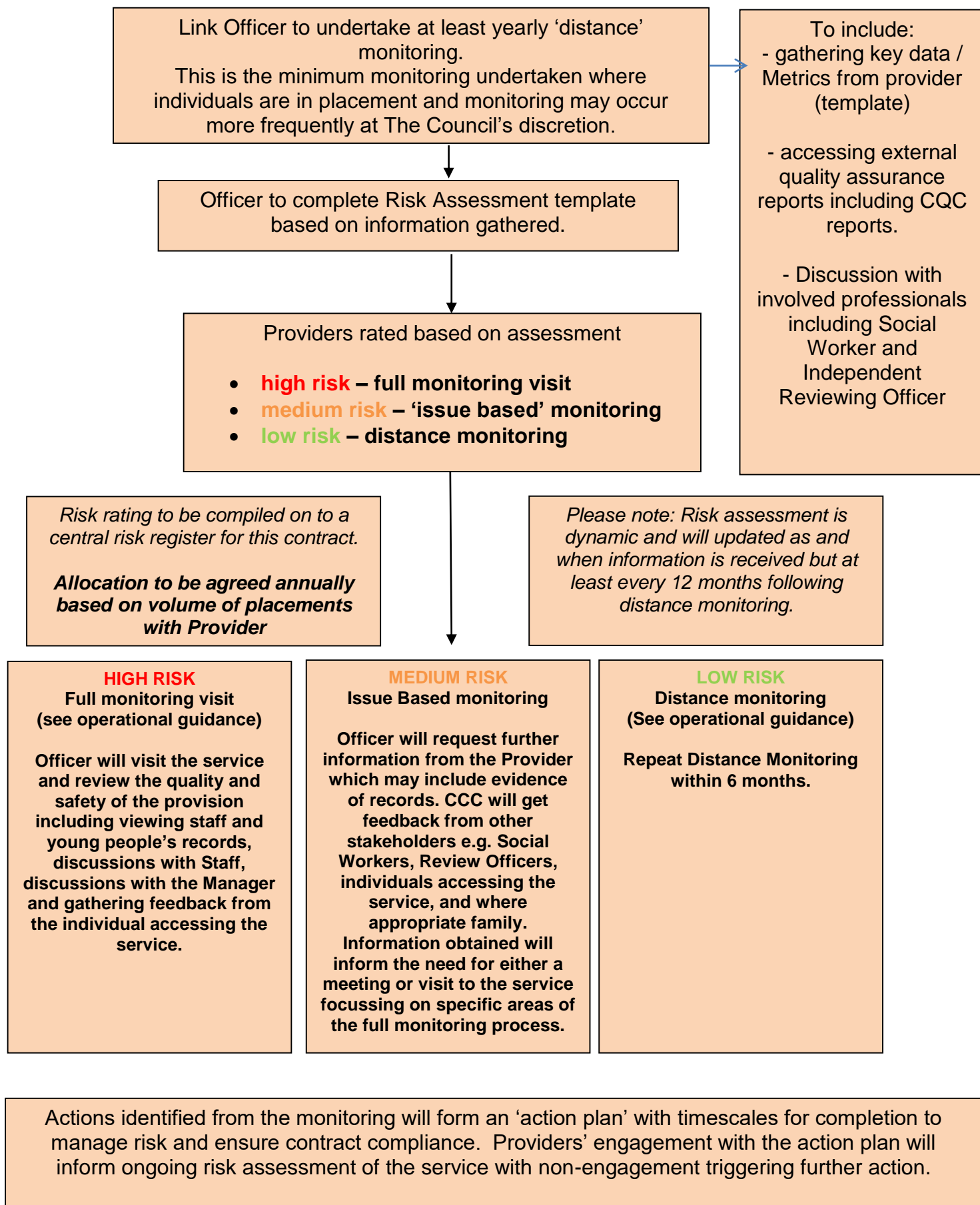


RISK ASSESSMENT FRAMEWORK FOR MONITORING



Guidance:

Risk Assessment

Framework for Risk Assessment takes into account the following factors:

- Status of current placements
- Working relationship with the Council
- External quality assurance
- Indicators including safeguarding, incidents, complaints, staff turnover and placement breakdowns.

CCC will prioritise visiting provision where Service Users are in placement or accessing a service.

- **Low Risk** indicates that the service has stable placements with no, low or well managed safeguarding and complaints. Ofsted/CQC rating is Good/Outstanding and other external quality assurance reports do not identify significant areas of development. Working relationship with the Council is effective and previous monitoring actions plan visits have been addressed within timescales.
- **Medium Risk** indicates an issue or concern has been identified through distance monitoring or reported by a Stakeholder.
- **High Risk** indicates that either minimal or no information is known about the Service requiring a full monitoring visit; that significant concerns or recurring themes have been identified through distance monitoring or reported by a Stakeholder or actions identified to reduce risk are not being addressed in a timely way.